

Product information presented here reflects conditions at time of publication. Consult factory regarding discrepancies or inconsistencies.



MAIL TO: P.O. BOX 16347 • Louisville, KY 40256-0347
SHIP TO: 3649 Cane Run Road • Louisville, KY 40211-1961
TEL: (502) 778-2731 • 1 (800) 928-PUMP • FAX: (502) 774-3624

Visit our web site:
zoellerpumps.com

REPLACEMENT PARTS LIST FOR MODELS:

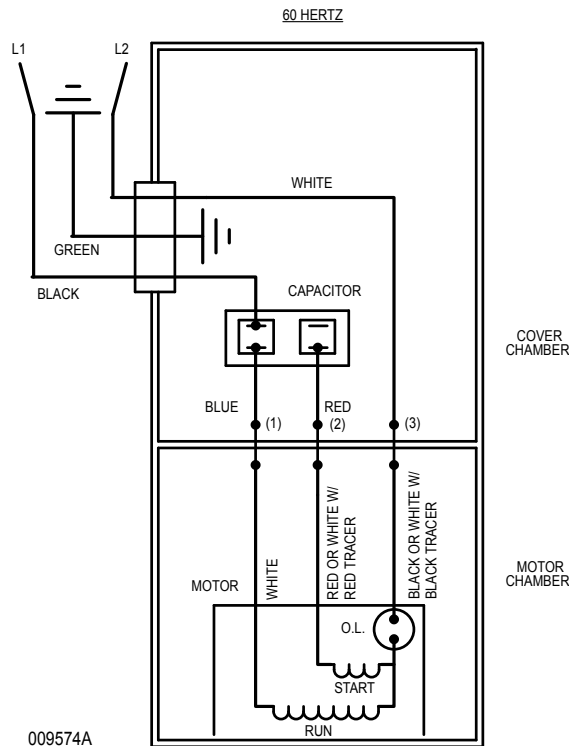
N270 NONAUTOMATIC 115V
E270 NONAUTOMATIC 230V
N4270 NONAUTOMATIC 115V
E4270 NONAUTOMATIC 230V

Consult factory for all other models

TO ORDER REPLACEMENT PARTS:

PLEASE FURNISH THE FOLLOWING INFORMATION:

- Model Number.
- Part Number of Pump.
- Part Number and Description of part.



WIRING DIAGRAM FOR MODELS
"N270" All Revisions; "E270" All Revisions;
"N4270" All Revisions; "E4270" All Revisions
6/95 thru Current

REPLACEMENT PARTS LIST FOR SINGLE SEAL MODELS "N270" and "E270".

See back page for illustration.

REF NO.	DESCRIPTION	MODELS:		N270-A	N270-B	N270-C	N270-D	N270-E	E270-A	E270-B	E270-C	E270-D	E270-E
		QTY	NOTES										
1	HANDLE	1		267032	267032	267032	267032	267032	267032	267032	267032	267032	267032
2	CASE ASSEMBLY	1		267051	011549	011549	011549	011549	267051	011549	011549	011549	011549
3	CASE GASKET	1		267007	267007	267007	267007	267007	267007	267007	267007	267007	267007
4	POWER CORD	1	3	010155	011551	011551	011551	011551	011558	003618	003618	003618	003618
5	SEAL ASSEMBLY POWER	1		010154	010154	010154	010154	010154	010154	010154	010154	010154	010154
6	MOTOR HOUSING ASM SOURCE	1	5	010156	010156	010156	010156	010156	010157	010157	010157	010157	010157
	N/A			N/A	N/A	N/A	N/A	N/A	N/A	N/A	N/A	N/A	N/A
7	ROTOR & BRG ASM SOURCE	1	5	010994	010994	010994	010994	010994	010994	010994	010994	010994	010994
	N/A			N/A	N/A	N/A	N/A	N/A	N/A	N/A	N/A	N/A	N/A
8	BEARING RADIAL	1		009540	009540	009540	009540	009540	009540	009540	009540	009540	009540
9	25 OZ OIL CAN	1		010330	010330	010330	010330	010330	010330	010330	010330	010330	010330
10	SEAL ASSEMBLY	1		011681	011681	011681	011681	011681	011681	011681	011681	011681	011681
11	SQUARE RING SEAL	1		267006	267006	267006	267006	267006	267006	267006	267006	267006	267006
12	BASE	1		010973	010973	010973	010973	010973	010973	010973	010973	010973	010973
13	HANDLE RETAINERS	2		267053	267053	267053	267053	267053	267053	267053	267053	267053	267053
14	TERM INSULATOR	2		001797	N/A	N/A	N/A	N/A	001797	N/A	N/A	N/A	N/A
15	WIRE PACK	1		010159	011548	011548	011548	011548	010159	011548	011548	011548	011548
16	CAPACITOR ASSEMBLY	1	4	010160	011550	011550	011550	011550	010160	011550	011550	011550	011550
17	PUMP HOUSING	1		009519	009519	009519	009519	009519	009519	009519	009519	009519	009519
18	IMPELLER	1		011690	011690	011690	011690	011690	011690	011690	011690	011690	011690
19	SCREW 1/2-24X3/8	2		001883	001883	001883	001883	001883	001883	001883	001883	001883	001883
20	SCREW 1/4-20X3/4	4		001916	001916	001916	001916	001916	001916	001916	001916	001916	001916
21	SCREW 5-32X7/16	1		004644	004644	004644	004644	004644	004644	004644	004644	004644	004644
22	WASHER#6	1		002117	002117	002117	002117	002117	002117	002117	002117	002117	002117
23	GROUND SCREW	3		001877	001877	001877	001877	001877	001877	001877	001877	001877	001877
24	THRU WALL TERMINAL	3		003402	003402	003402	003402	003402	003402	003402	003402	003402	003402
25	O-RING	1		005701	005701	005701	005701	005701	005701	005701	005701	005701	005701
26	SCREW #10-10X1 HHX WASH	10		005326	005326	005326	005326	005326	005326	005326	005326	005326	005326
27	TEST PLUG	2		034090	034090	034090	034090	034090	034090	034090	034090	034090	034090
28	SCREWS	4		012491	012491	012491	012491	012491	012491	012491	012491	012491	012491
29	CAP BRACKET	1		153350	153350	153350	153350	153350	153350	153350	153350	153350	153350
☐	REBUILD KIT	1		010173	010173	010173	010173	010173	010173	010173	010173	010173	010173

• Items included in Rebuild Kit.

☐ Not shown in illustration.

NOTES:

- 1) See FM0160 parts price sheet for listing of parts pricing.
- 2) "N/A" indicates not applicable.
- 3) If an "X" follows model number or date of manufacture on brass I.D. tag, consult factory for ordering of this part.
- 4) The capacitor assembly on "REV. A" pumps only (Item 16), includes the case assembly (Item 2) which the customer must also replace.
- 5) When ordering motor housing (Item 6) or rotor and bearing (Item 7), specify either source or ZT motor. ZT stator can be identified by a completely round stator.

REPLACEMENT PARTS LIST FOR DOUBLE SEAL MODELS "N4270" and "E4270"

See back page for illustration.

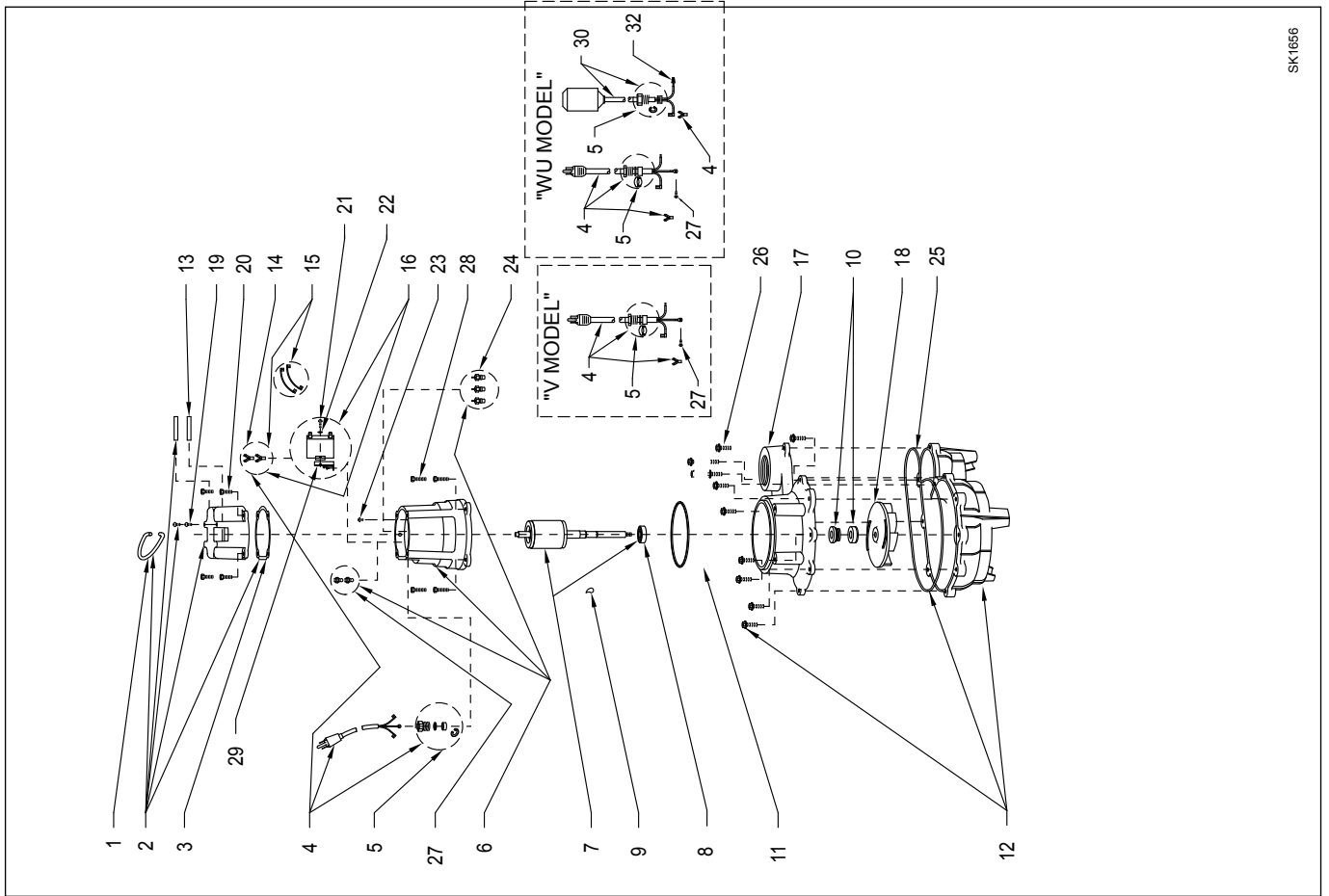
REF NO.	DESCRIPTION	MODELS:										E4270-E
		N4270-A	N4270-B	N4270-C	N4270-D	N4270-E	N4270-A	N4270-B	N4270-C	N4270-D	N4270-E	
QTY	NOTES	6/95 thru 5/97	6/97 thru 3/07	4/07 thru 4/08	5/08 thru 8/09	9/09 thru Current	6/95 thru 5/97	6/97 thru 3/07	4/07 thru 6/08	7/08 thru 12/08	1/09 thru Current	
1	HANDLE	267032	267032	267032	267032	267032	267032	267032	267032	267032	267032	
2	CASE ASSEMBLY	267051	011549	011549	011549	011549	267051	011549	011549	011549	011549	
3	CASE GASKET	267007	267007	267007	267007	267007	267007	267007	267007	267007	267007	
4	POWER CORD	010155	011551	011551	011551	011551	011558	003618	003618	003618	003618	
5	SEAL ASSEMBLY POWER	010154	010154	010154	010154	010154	010154	010154	010154	010154	010154	
6	MOTOR HOUSING ASM/SOURCE	010156	010156	010156	010156	010156	010157	010157	010157	010157	010157	
	MOTOR HOUSING ASM/ZT	N/A	N/A	N/A	N/A	150013	N/A	N/A	N/A	N/A	150014	
7	ROTOR & BRG ASM/SOURCE	010996	010996	010996	010996	010996	010996	010996	010996	010996	010996	
	ROTOR & BRG ASM/ZT	N/A	N/A	N/A	N/A	150016	N/A	N/A	N/A	N/A	150016	
8	36.5 OZ OIL CAN	010331	010331	010331	010331	010331	010331	010331	010331	010331	010331	
9	16 OZ OIL CAN	010158	010158	010158	010158	010158	010158	010158	010158	010158	010158	
10	SEAL ASSEMBLY	011681	011681	011681	011681	011681	011681	011681	011681	011681	011681	
11	SQUARE RING SEAL	267006	267006	267006	267006	267006	267006	267006	267006	267006	267006	
12	BASE	153009	153009	153009	153009	153009	153009	153009	153009	153009	153009	
13	HANDLE RETAINERS	267053	267053	267053	267053	267053	267053	267053	267053	267053	267053	
14	TERM INSULATOR	001797	N/A	N/A	N/A	N/A	001797	N/A	N/A	N/A	N/A	
15	WIRE PACK	010159	011548	011548	011548	011548	010159	011548	011548	011548	011548	
16	CAPACITOR ASSEMBLY	010160	011550	011550	011550	011550	010160	011550	011550	011550	011550	
17	BEARING	009540	009540	009540	009540	009540	009540	009540	009540	009540	009540	
18	ADAPTER	011679	011679	011679	011679	011679	011679	011679	011679	011679	011679	
19	PUMP HOUSING	010939	010939	010939	010939	010939	010939	010939	010939	010939	010939	
20	IMPELLER	011690	011690	011690	011690	011690	011690	011690	011690	011690	011690	
21	TEST PLUG	034090	034090	034090	034090	034090	034090	034090	034090	034090	034090	
22	SCREW 1/4-20X3/4	001916	001916	001916	001916	001916	001916	001916	001916	001916	001916	
23	SCREW 10-24X3/8	001883	001883	001883	001883	001883	001883	001883	001883	001883	001883	
24	SCREW 6-32X7/16	004644	004644	004644	004644	004644	004644	004644	004644	004644	004644	
25	WASHER #6	002117	002117	002117	002117	002117	002117	002117	002117	002117	002117	
26	GROUND SCREW	001877	001877	001877	001877	001877	001877	001877	001877	001877	001877	
27	THRU WALL TERMINAL	003402	003402	003402	003402	003402	003402	003402	003402	003402	003402	
28	SNAP RING & WASHER	010167	010167	010167	010167	010167	010167	010167	010167	010167	010167	
29	SCREW S	012491	012491	012491	012491	012491	012491	012491	012491	012491	012491	
30	CAP BRACKET	153350	153350	153350	153350	153350	153350	153350	153350	153350	153350	
□	REBUILD KIT	010166	010166	010166	010166	010166	010166	010166	010166	010166	010166	

• Items included in Rebuild Kit. □ Not shown in illustration.

NOTES:

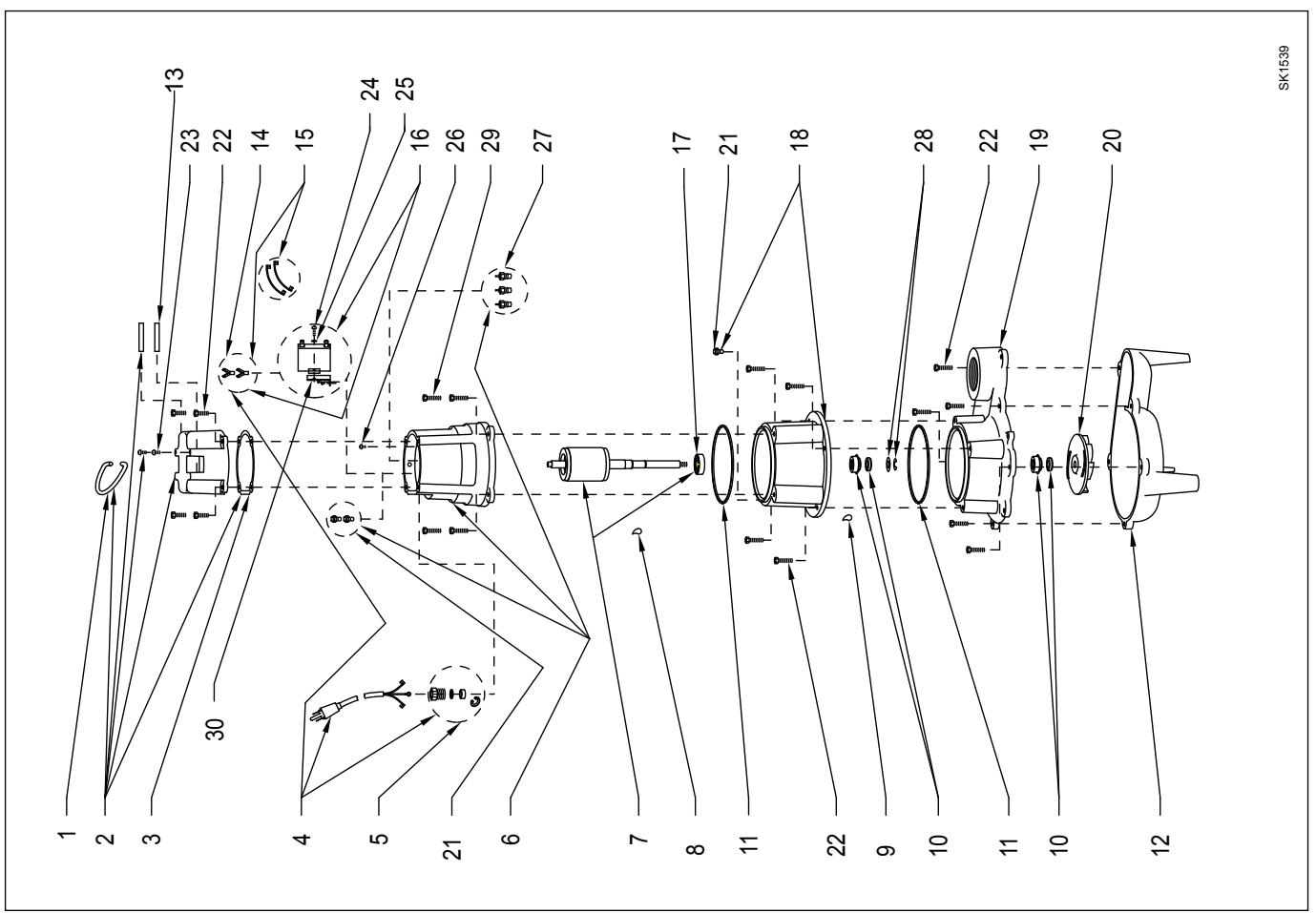
- 1) See FM0160 parts price sheet for listing of parts pricing.
- 2) "NA" indicates not applicable.
- 3) If an "X" follows model number or date of manufacture on brass I.D. tag, consult factory for ordering of this part.
- 4) The capacitor assembly on "REV. A" pumps only (Item 16), includes the case assembly (Item 2) which the customer must also replace.
- 5) When ordering motor housing (Item 6) or rotor and bearing (Item 7), specify either source or ZT motor. ZT stator can be identified by a completely round stator.

REPLACEMENT PARTS ILLUSTRATION FOR MODELS "N270" AND "E270"



SK1656

REPLACEMENT PARTS ILLUSTRATION FOR MODELS "N4270" AND "E4270"



SK1539